

# Lights

---

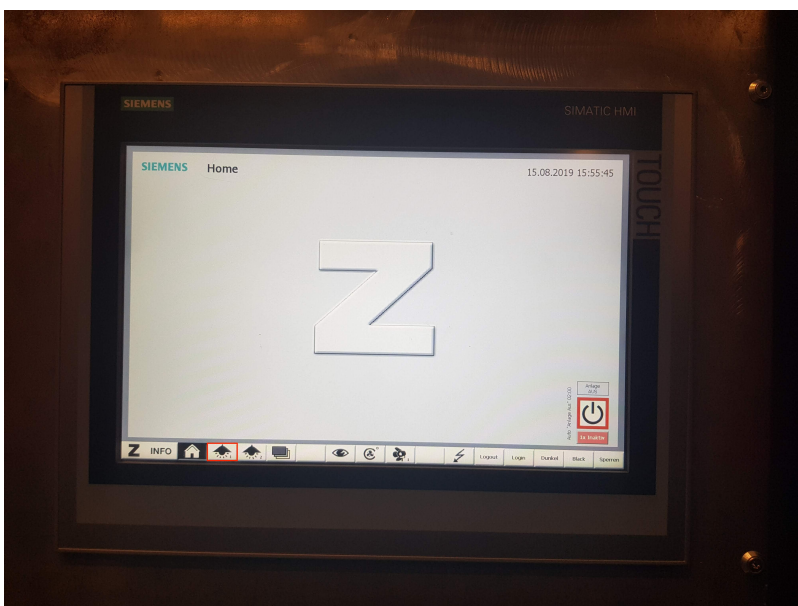
**PLEASE TURN OFF ALL LIGHTS WHEN YOU LEAVE THE ROOM.**



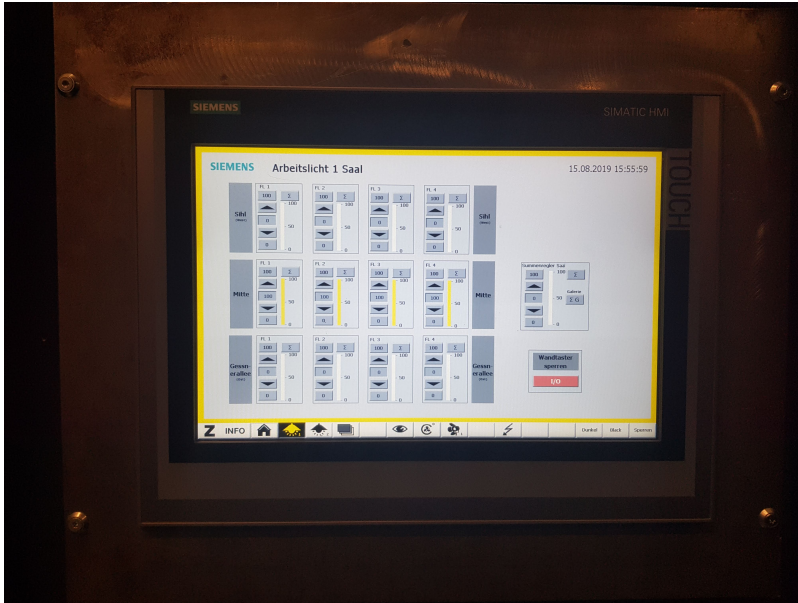
---

## SPACE Lights

You can turn on/off or dim all the **SPACE** lights at the **touch panel near the deposit door** or at **the controller near the entrance door**. To control them from the touch panel, go under the lamp symbol number 1.

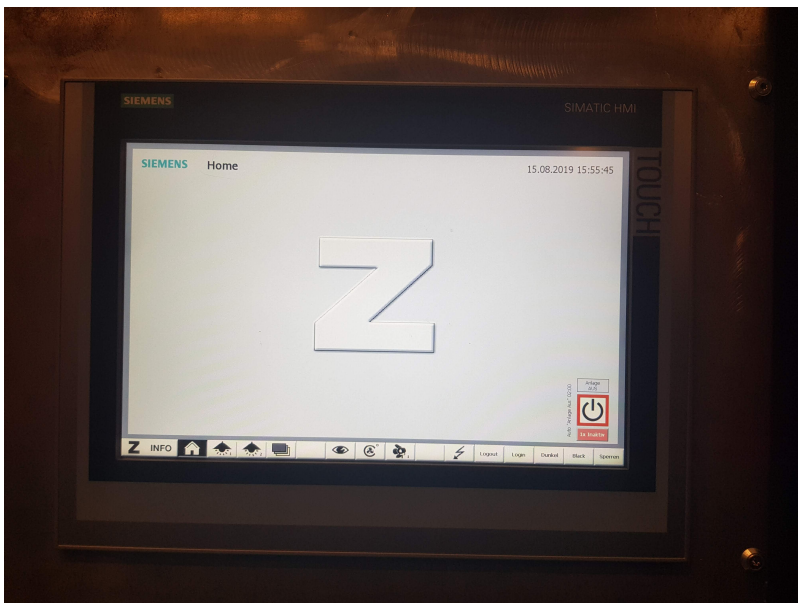


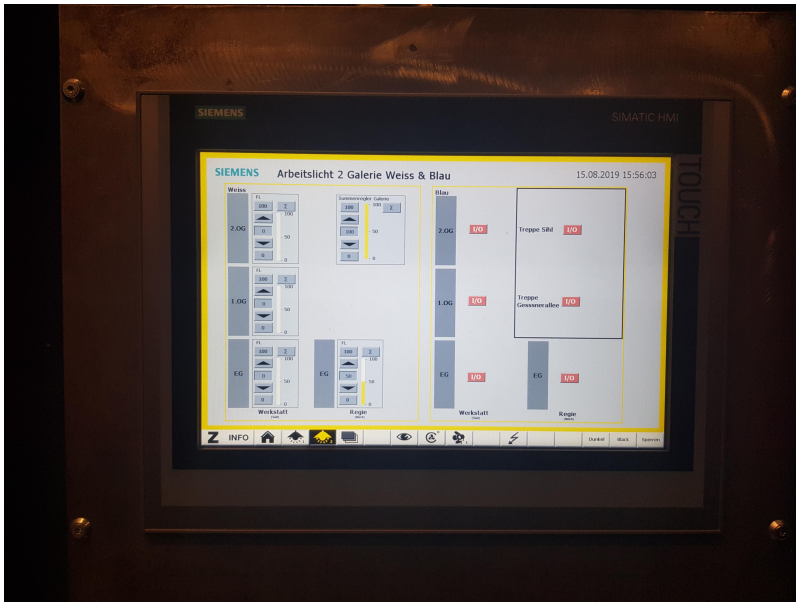
Each row represents a set of lights.



## GALLERIE Lights

You can turn on/off or dim all the **GALLERIE** lights at the **touch panel near the deposit door or at the controller near the entrance door**. To control them from the touch panel, go under the lamp symbol number 2.





## SPOT Lights

You can turn on/off or dim all the **SPOT** lights at the **controller near the entrance door**.

From:

<https://wiki.zhdk.ch/IASpace/> - **immersive art space**

Permanent link:

[https://wiki.zhdk.ch/IASpace/doku.php?id=hardware\\_lights](https://wiki.zhdk.ch/IASpace/doku.php?id=hardware_lights)

Last update: **2019/08/15 18:23**

