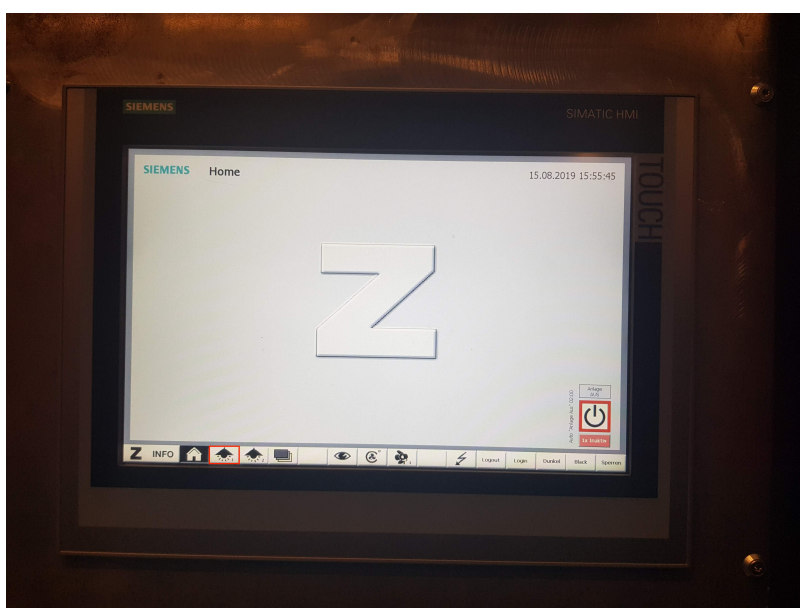


Lights

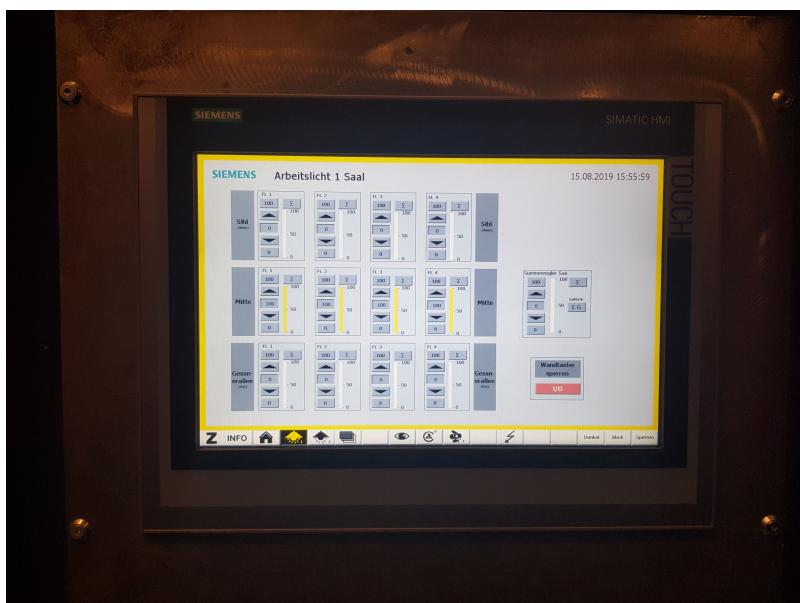
PLEASE TURN OFF ALL LIGHTS WHEN YOU LEAVE THE ROOM.

SPACE Lights

You can turn on/off or dim all the **SPACE** lights at the **touch panel near the deposit door** or at **the controller near the entrance door**. To control them from the touch panel, go under the lamp symbol number 1.

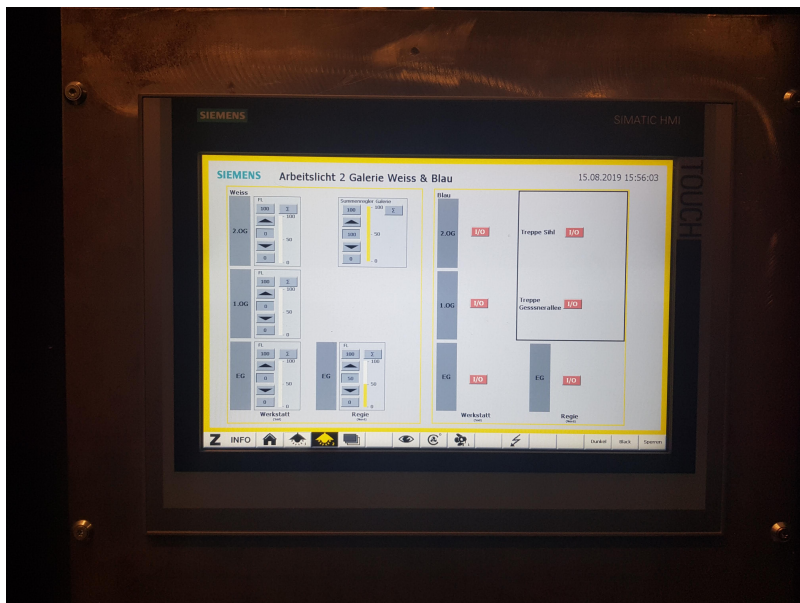
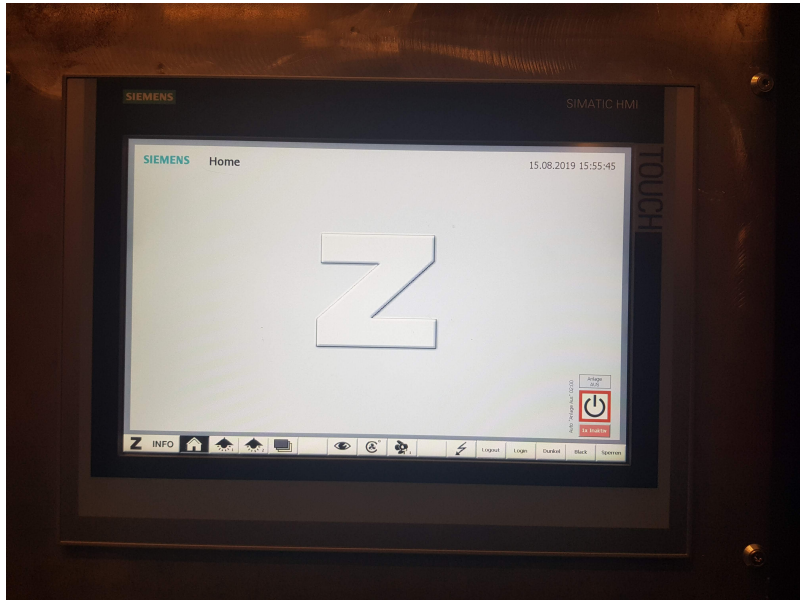


Each row represents a set of lights.



GALLERIE Lights

You can turn on/off or dim all the **GALLERIE** lights at the **touch panel near the deposit door** or at **the controller near the entrance door**. To control them from the touch panel, go under the lamp symbol number 2.



SPOT Lights

You can turn on/off or dim all the **SPOT** lights at the **controller near the entrance door**.

From:
<https://wiki.zhdk.ch/IASpace/> - **immersive art space**

Permanent link:
https://wiki.zhdk.ch/IASpace/doku.php?id=hardware_lights&rev=1565885686

Last update: **2019/08/15 18:14**

