

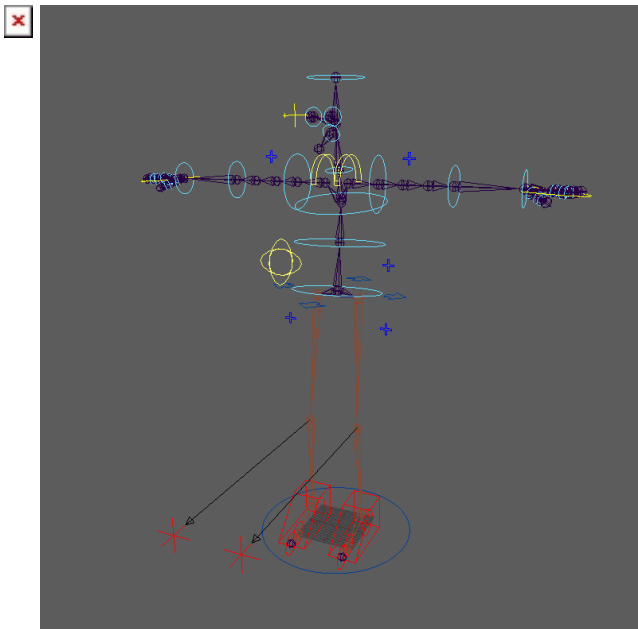
Maya

Create Skeleton

Remarks:

- Export only Deformation System for Unity.
- The Advanced Skeleton Rigging Tool is needed for this step. It is currently not installed on the Innovation Lab computers.

1. Use Advanced Skeleton Rigging Tool to create a rig
2. Fit Skeletons: Select bipedGame.ma for Unity compatibility
3. Auto Orient: Fit Now and click Update now
4. Click Build Advanced Skeleton to create Rig



Import Character Model

1. Model your character in T-Pose and not Y-Pose to connect the mocap data.
2. File > Create Reference... and choose model file and namespace to link to. Set a short namespace, which is important for import/export.



Characterize

Before we can use mocap data, we need to characterize (link each joint to a global label/character node):

1. Display HumanIK: Windows > Animation Editors > HumanIK
2. In HumanIK click on Create Character Definition
4. Define Characterize:

Create Character Definition Rename Character (by clicking on blue IK icon) Map Joints from Outliner to IK character. Open by Shift Click in Outliner on +. Part Joints do not need to be mapped. Only Main Joints.

Map Root in Outliner is the Hip in Character by click in Outline the Hip and Rightclick on Hip in Character > Assigned selected Bone.

Map Shoulder does not work if character is not in T-Pose. The character will get orange if there is a problem. Rotate Arms so that the Model is in T-Pose. The character part will switch to green if it can be mapped correctly.

Also the feed must be parallel to the Z Axis. If you change the model, make clear the assign data before reassign it to refresh de offsets (the offsets are calculated when you Assign the bones).

At thte first Spine (Spine1) apply the Chest.

At the first neck (Neck) apply the Neck.

Go on with all other Joints.

If the green checkmark is displayed, everything is ready.

Save Skeleton Defintion at the end by klicking Floppy at IK Window: The prefix needs to be changed since we use a Reference. If we limport the Mocap Data, there will be a Namespace (name of the Character in Motive). Delete the "Root" of of the prefix but leave ":". Change the path to the "data" location in your maya project.

If you do a new scene, you can import then this character defintion so you don't have to do it once again.

Save the Scene.

Control Rig

We need a control rig. In Maya not key joints directly. We key curves/controls, order to fix mocap problems.

Click on "Create Custom Rig Mapping" in Human IK. By default, it assign ankles and Hips. Connect controllers to the control rig by select the controller and right click on coressponding control rig point and "Assign selected Effector".

Disconnect the translation on the head (deactivate Map Translation).

Import Mocap Data

File > Import and choose FBX

Also the mocap data has to be characterized. Grab all Joints and set rotation to 0 (in channel box). Select Hip and set x=0 and z=0. Select Hips and move y so that character stands on ground.

Open Human IK and klick Create Character Defintion. Rename Charackter to "Mocap"

Assign all bones from mocap Skeleton to Character by selecting bone in Sekelton and right click on Character "Assign Selected Bone". For Hip and Neck use lowest joint.

Save Skeleton Definition. No need to change prefix. Change Location to your maya project. Change Template name to "mocap_CD".

In Human IK, select Character your Character, and on Source select the Mocap Character.

Select the pole vector and set it to follow (10) in channel display.

You need to Bake the Mocap Animation to the Human IK skeleton: Human IK > Bake > Bake Custom Rig

After that, you can start clean the Mocap Data.

Update Mocap Data

Import Otions > File Type set to FBX. When you know File Content: import Add and Update Animation, it will just update the motion data. You do not have to recreate everything.

Fix Mocap Data

Select Controler to fix. Window > Animation Editors > Graph Editor Select parameter to fix and time range to fix with mouse Curves > Simplify Curves (set start and end frame).

Do not Simplify over a whole take at once.

Export Rig

Open the original character file.

Open Deformation System in Outline. Select Root and Geometry. File > Game Exporter Export only Selection File Type: FBX (Binary) 2013

Export Animation

File > Export Game FBX 2018 Filetype Activate Animation in Export window. Acitvate Bake Animation Add Animation Clips in Export Window

From:

<https://wiki.zhdk.ch/IASpace/> - **immersive art space**

Permanent link:

<https://wiki.zhdk.ch/IASpace/doku.php?id=maya&rev=1524212867>

Last update: **2018/04/20 10:27**

