

# Setup Tracking Suit

## Suit

**Use the tracking suits ONLY with the black cotton-bodies underneath. It is the users responsibility to wash the bodies and bring them back in a timely manner.**

- Choose a suitable suit size for the actor.
- Take off all the markers that are still on the suit.
- Make sure the **suit fits tight** and the top and pants cannot shift (use velcro between jacket and pants)
- Put on shoes and gloves



## Marker Placement

Inside Motive, go to Menu > Layout > Create.

There are different marker sets (marker placements) for different use cases (with or without finger tracking). Choose in the Builder Pane > Skeleton under Markerset the markerset you wish to use. We recommend using the following different sets:

- Baseline + Toe (41 Markers) for body tracking
- Markerset Baseline + 11 Markers + Fingers (54 Markers) for body and finger tracking

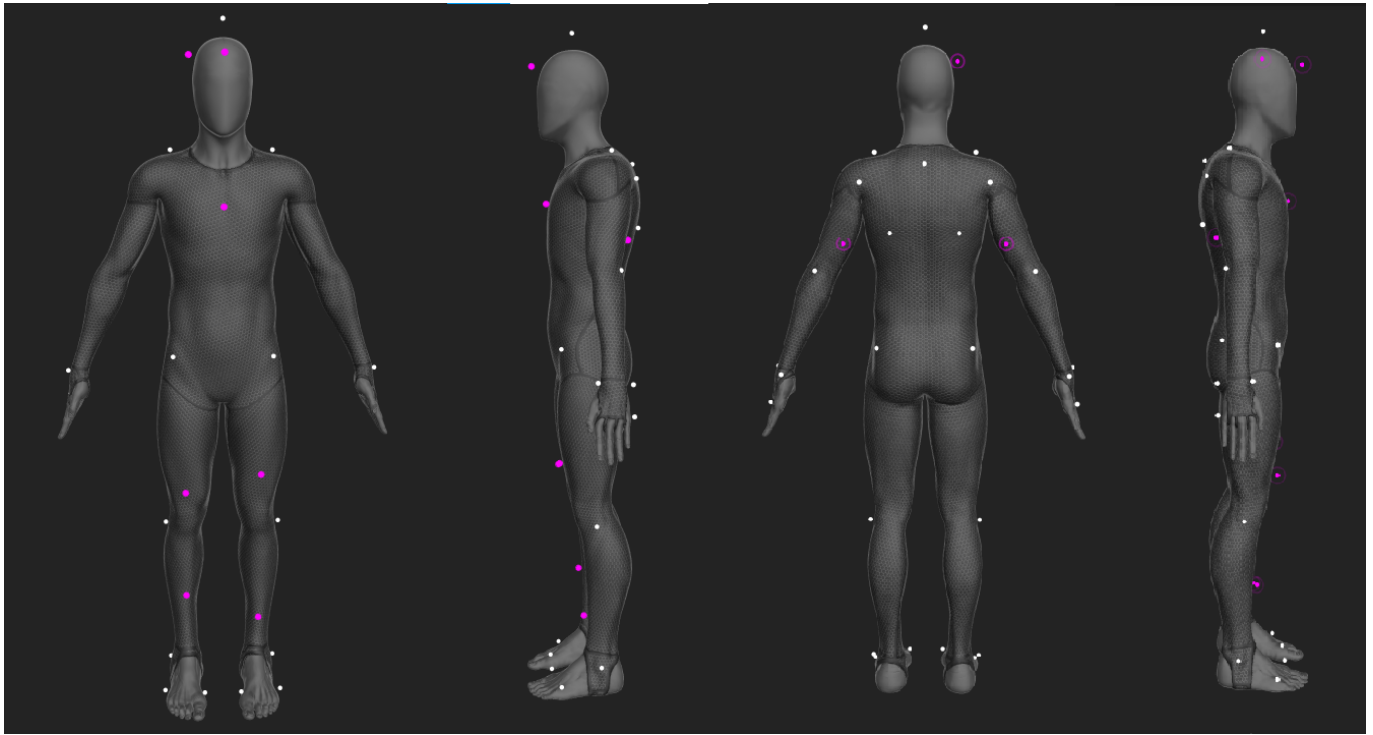
Attach the markers according to the 3D character.

Take care at the placement of the **white markers** at the joints. Set the markers in such a way, that the **marker defines the axis of the joint and doesn't move when the joint is used** (ankle, knee, shoulder, elbow).

The **purple markers** are on bones and should be placed accordingly but can vary a bit in exact position.

Make sure that all markers are still reflecting light and are not damaged.

### Markerset Baseline (37 Markers)



Make sure that the marker on the front upper leg are asymmetrical as indicated.

### Markerset Baseline + Toe (41 Markers)



Make sure that the marker on the front upper leg are asymmetrical as indicated.

### Markerset Baseline + 11 Markers + Fingers (54 Markers)



Make sure that the marker on the front upper leg are asymmetrical as indicated and the one on the lower back is on the left side.

## Create Character

Let the actor stand in the center of the space and take the T-pose.

The system should detect now all necessary markers. It shows how many markers are necessary and how many are detected. You can only create the character if you have the exact number of markers.

Give your character a Name and press Create.

If everthing went right, the virtuell character should appear inside perspective view. Make sure the settings allow the display of the skeletons:



Adjust manually each bodypart if they appear to be off.



From:

<https://wiki.zhdk.ch/IASpace/> - **immersive art space**

Permanent link:

[https://wiki.zhdk.ch/IASpace/doku.php?id=motive\\_trackingsuit](https://wiki.zhdk.ch/IASpace/doku.php?id=motive_trackingsuit)

Last update: **2019/09/17 17:32**

